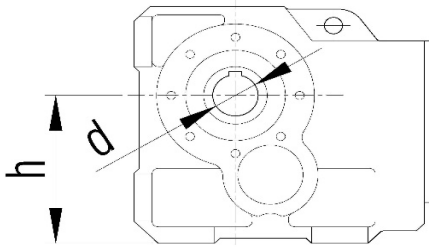


**Gearboxes and Drives**  
**HELICAL GEAR UNITS**

## Gearbox selection table - IR Series

ITEM NO	I-MAK			SEW			NORD			MAX. TORQUE (Nm)
	TYPE	d	h	TYPE	d	h	TYPE	d	h	
1	iR 42 iR 43	20k6	75	R17	20k6	75	SK 02	20k6	86	85
2	iR 52 iR 53	25k6	90	R27	25k6	90	SK 12	25k6	102	130
3				R37	25k6	90				200
4	iR 621 iR 631	30k6	115	R47	30k6	115	SK 22	30k6	115	300
5	iR 62 iR 63	35k6	115	R57	35k6	115				450
6	iR 721 iR 731	35k6	130	R67	35k6	130				600
7	iR 72 iR 73	40k6	140	R77	40k6	140	SK 32	40k6	155	820
8	iR 82 iR 83	50k6	180	R87	50k6	180	SK 42	45k6	175	1550
9	iR 92 iR 93	60m6	225	R97	60m6	225	SK 52	55m6	212	3000
10	iR 102 iR 103	70m6	250	R107	70m6	250	SK 62	65m6	250	4300
							SK 72	75m6	280	
11	iR 122 iR 123	90m6	315	R137	90m6	315	SK 82	90m6	315	8000
12	iR 142 iR 143	110m6	355	R147	110m6	355	SK 92	110m6	390	13000
13	iR 152 iR 153	120m6	425	R167	120m6	425	SK 102	130m6	450	18000

**HELICAL GEAR UNITS**



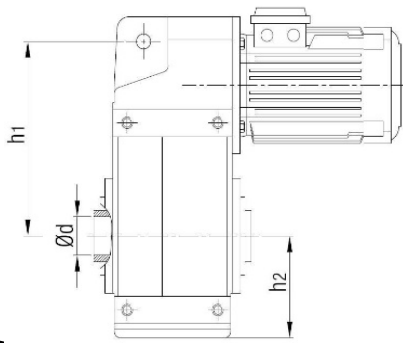
Gearboxes and Drives

HELICAL BEVEL GEARED UNITS

# Gearbox selection table - IRK Series

ITEM NO	I-MAK				SEW				NORD				MAX. TORQUE (Nm)
	Type	d <sub>hollow shaft</sub>	d <sub>solid shaft</sub>	h	Type	d <sub>hollow shaft</sub>	d <sub>solid shaft</sub>	h	Type	d <sub>hollow shaft</sub>	d <sub>solid shaft</sub>	h	
1	<b>IRK 43</b>	30 <sub>H7</sub> 35 <sub>H7</sub>	25 <sub>k6</sub> 35 <sub>k6</sub>	80									160
2	<b>IRK 53</b>	30 <sub>H7</sub> 35 <sub>H7</sub>	25 <sub>k6</sub> 35 <sub>k6</sub>	100	<b>K37</b>	30 <sub>H7</sub>	25 <sub>k6</sub>	100					200
3	<b>IRK 63</b>	35 <sub>H7</sub>	35 <sub>k6</sub>	112	<b>K47</b>	35 <sub>H7</sub>	30 <sub>k6</sub>	112	<b>SK 9012.1</b>	30 <sub>H7</sub>	30 <sub>k6</sub> 35 <sub>k6</sub>	112	400
4					<b>K57</b>	40 <sub>H7</sub>	35 <sub>k6</sub>	132					600
5	<b>IRK 73</b>	40 <sub>H7</sub>	40 <sub>k6</sub>	140	<b>K67</b>	40 <sub>H7</sub>	40 <sub>k6</sub>	140	<b>SK 9022.1</b>	35 <sub>H7</sub>	35 <sub>k6</sub>	140	820
6	<b>IRK 83</b>	50 <sub>H7</sub>	50 <sub>k6</sub>	180	<b>K77</b>	50 <sub>H7</sub>	50 <sub>k6</sub>	180	<b>SK 9032.1</b>	40 <sub>H7</sub>	45 <sub>k6</sub>	180	1550
7	<b>IRK 93</b>	60 <sub>H7</sub>	60 <sub>m6</sub>	212	<b>K87</b>	60 <sub>H7</sub>	60 <sub>m6</sub>	212	<b>SK 9042.1</b>	50 <sub>H7</sub>	60 <sub>m6</sub>	212	2700
8	<b>IRK 103</b>	70 <sub>H7</sub>	70 <sub>m6</sub>	265	<b>K97</b>	70 <sub>H7</sub>	70 <sub>m6</sub>	265	<b>SK 9052.1</b>	60 <sub>H7</sub> 70 <sub>H7</sub>	70 <sub>m6</sub>	265	4300
	<b>IRK 123</b>	90 <sub>H7</sub>	90 <sub>m6</sub>	315	<b>K107</b>	90 <sub>H7</sub>	90 <sub>m6</sub>	315	<b>SK 9072.1</b>	80 <sub>H7</sub> 90 <sub>H7</sub>	90 <sub>m6</sub>	315	8000
9													8000
10	<b>IRK 143</b>	110 <sub>H7</sub>	110 <sub>m6</sub>	375	<b>K127</b>	100 <sub>H7</sub>	110 <sub>m6</sub>	375	<b>SK 9082.1</b>	100 <sub>H7</sub>	110 <sub>m6</sub>	375	13000
11	<b>IRK 153</b>	120 <sub>H7</sub>	120 <sub>m6</sub>	450	<b>K157</b>	120 <sub>H7</sub>	120 <sub>m6</sub>	450	<b>SK 9086.1</b>	110 <sub>H7</sub>	120 <sub>m6</sub>	450	18000
12					<b>K167</b>	140 <sub>H7</sub>	160 <sub>m6</sub>	500					32000
13					<b>K187</b>	160 <sub>H7</sub>	190 <sub>m6</sub>	600					50000

**BEVEL GEAR UNITS**



Gearboxes and Drives

PARALLEL GEAR UNIT

# Gearbox selection table - YP Series

ITEM NO	I-MAK				SEW				NORD				MAX. TORQUE (Nm)
	TiP	d hollow shaft	d solid shaft	h1 h2	TiP	d hollow shaft	d solid shaft	h1 h2	TiP	d hollow shaft	d solid shaft	h1 h2	
1					F27	25H7	25k6	140 60					130
2	YP 53 YP 52	30H7	25k6	158 76	F37	30H7	25k6	158 76	SK 1282A	30H7	30k6	165 75	200
3	YP 63 YP 62	35H7	30k6	170 88	F47	35H7	30k6	170 77	SK 2282A	35H7	35k6	211 90	400
4					F57	40H7	35k6	198 93	SK 3282A	40H7	45k6	250 106	
5	YP 73 YP 72	40H7	40k6	218 110	F67	40H7	40k6	218 97	SK 4282A	50H7	55m6	281 123	820
6	YP 83 YP 82	50H7	50m6	260 129	F77	50H7	50k6	278 121	SK 5282A	60H7	65m6	341 144	1500
7	YP 93 YP 92	60H7	60m6	331 149	F87	60H7	60m6	346 152	SK 6282A	70H7	75m6	357 173	3000
8	YP 103 YP 102	70H7	70m6	395 178	F97	70H7	70m6	395 178	SK 7282A	80H7	90m6	399 196	4300
9	YP 123 YP 122	90H7	90m6	460 204	F107	90H7	90m6	485 200	SK 8282A	100H7	110m6	465 225	7840
10	YP 143 YP 142	110H7	110m6	550 242	F127	100H7	110m6	550 236	SK 9282A	120H7	140m6	584 295	12000
11	YP 153 YP 152	120H7	120m6	660 285	F157	120H7	120m6	660 286	SK 10282A		160m6	660 310	18000
12									SK 11282A		180m6	853 416	
									SK 12282A		180m6	853 416	

PARALLEL GEARED UNIT